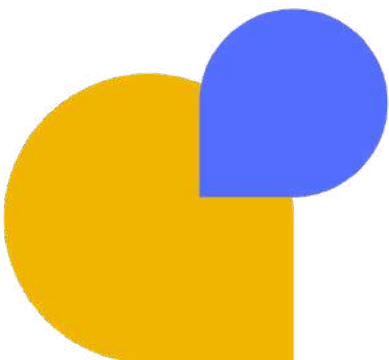


# Case Study and Study in Depth



## Case Study and Study in Depth

I suggest you see the following links, where you will find an interesting synthesis of the concepts we have worked on: how the child expresses and manifests his emotions and what attachment bonds are, both the significant and the distant ones. This is a very important issue in which a large part of the young child's emotional future is played.

What if we share your reflections in the Forum?

### **Early emotions:**

<https://www.youtube.com/watch?v=r-hTthOzudQ>

### **Bonds of attachment:**

<https://www.youtube.com/watch?v=KoO4MSO8Mgo>

### **Contemptuous and distant parents:**

<https://www.youtube.com/watch?v=QDONgD3GVvc>

### **Phases in attachment bonds:**

<https://www.youtube.com/watch?v=HN4sXuXlOXo>